

# Bomanite®

## Broadcast Flake Standard Color Chart

COLOR FOR:

HIGH  
PERFORMANCE  
COATINGS

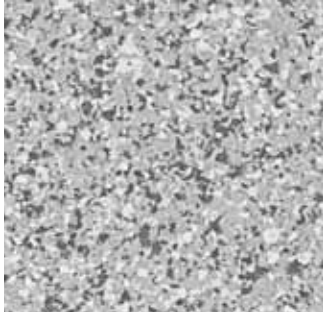
COATINGS TO  
ENHANCE AND  
PROTECT  
CONCRETE  
SURFACES





# Bomanite Broadcast Flake Color Chart

## STANDARDS



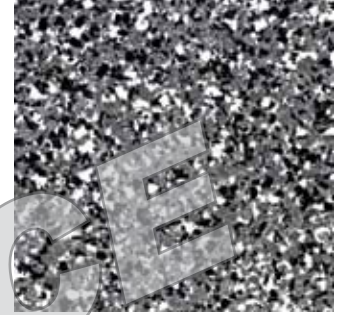
TP-BF-010111-01



TP-BF-010111-02



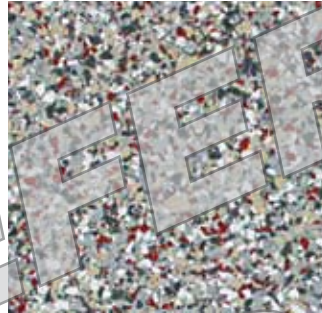
TP-BF-010111-05



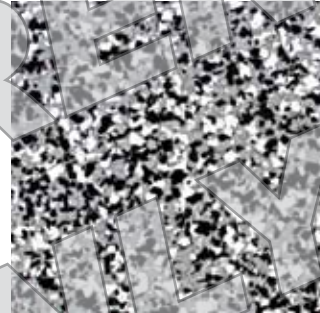
TP-BF-010111-04



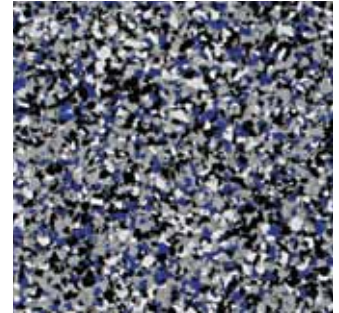
TP-BF-010111-06



TP-BF-010111-08



TP-BF-010111-15



TP-BF-051011-02

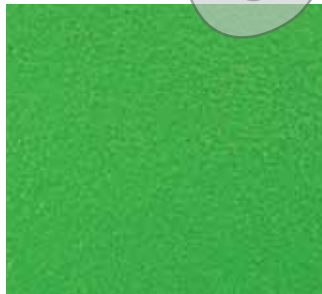
## CUSTOMS

Graphics



TP-BF-010111-17

Fluorescent



TP-BF-010111-18

Metallic



TP-BF-010111-09

Solid



TP-BF-010111-10

## IMPORTANT NOTES:

Bomanite Broadcast Flake floors are multi-colored flakes encapsulated in high performance, two-component primer, body and top coats. The base of design process utilizes Bomanite Florspartic 100 for all three coats however certain project specific criteria may influence the selection of a different Bomanite coating. Consult with your local Bomanite Toppings Licensee or Bomanite Technical Services for information on the high performance coatings appropriate for your particular application. For a complete listing of the Bomanite High Performance Coatings see the Cross Reference Guideline located at [www.bomanite.com/toppings/crossreference](http://www.bomanite.com/toppings/crossreference).

Standard color blends are available in 1/4" (pictured) and 1/8" sizing's. 1/16", 3/8" and 5/8" are also available upon request. For additional color options reference the Bomanite Coloration Systems Standard Color Chart or select the desired color from a Pantone Guide or equal. Custom flakes such as metallic and fluorescent shades, glow in the dark and silver sparkle are also available upon request. Various graphic designs or patterns may be incorporated into a Bomanite Broadcast Flake System. Consult with your local Bomanite Licensed Toppings installer for additional information on custom flakes and unique projects.

It is strongly recommended that samples be created, viewed and approved using construction techniques and materials identical to those that will be used in the actual construction of the project. This sampling process must be completed prior to specifying the final color and appearance.

# Bomanite®

The Bomanite Company  
8789 Auburn Folsom Rd. #108  
Granite Bay, CA 95746  
(303) 369-1115 Fax: (303) 291-0282  
[www.bomanite.com](http://www.bomanite.com)

©2011 The Bomanite Company. Bomanite® is a registered trademark and servicemark with the U.S. Patent Office and other countries. 5C0611

Chart 400.12

Contact your authorized Bomanite Toppings  
Licensed Contractor to request a color chart.

*NOTE: The Bomanite Company strives to provide website users with the most accurate color information possible. Colors shown approximate as closely as possible the appearance of selected product, however the screen colors should only be used for ideas as these colors are low-resolution and do not represent final results. Please contact your local Bomanite Licensed Contractor to order product color charts and samples for the most accurate representation of available standard colors.*